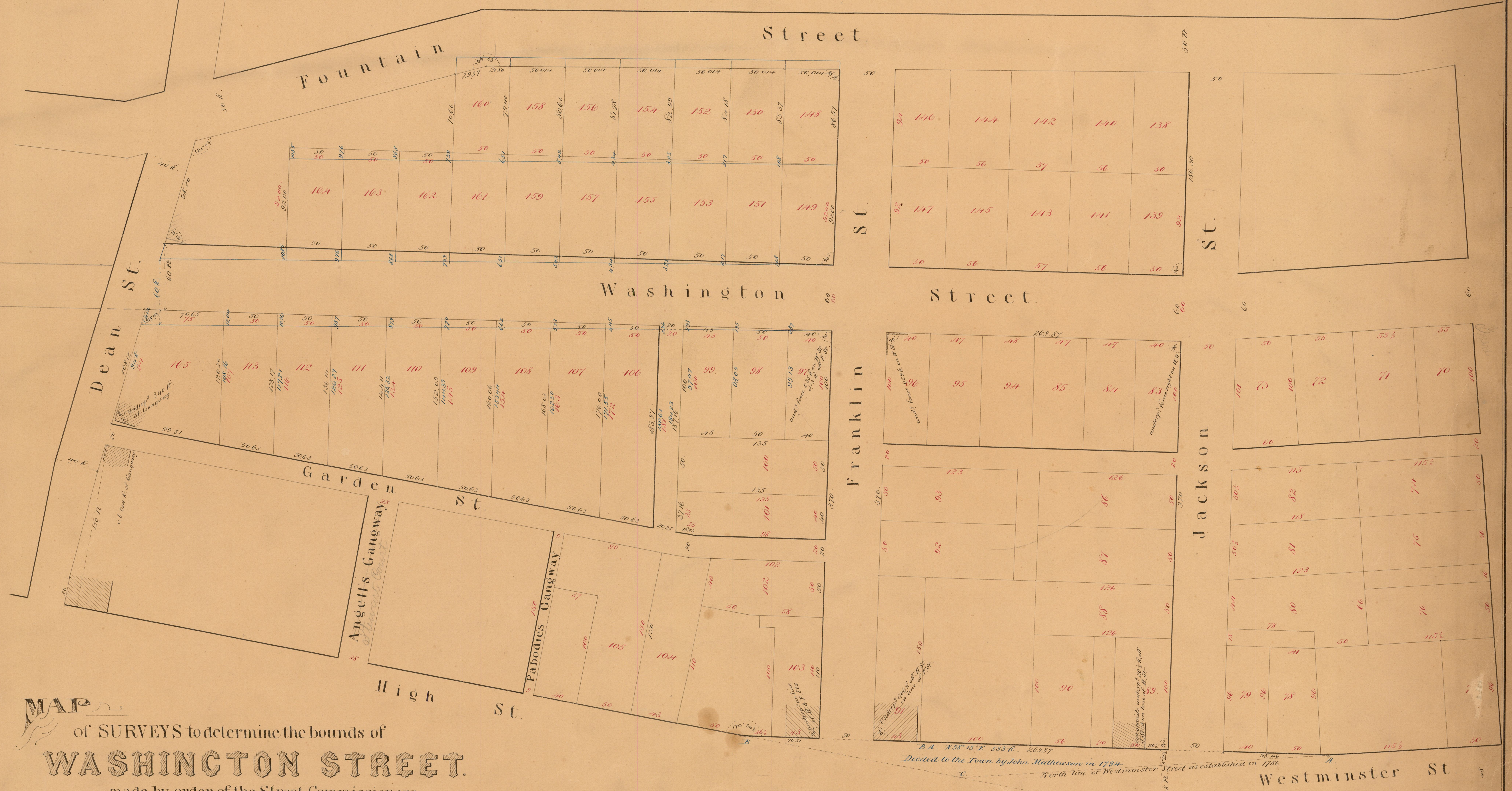


Note 1st. The figures, lines &c. in Black Ink, represent the bounds of streets &c. as they are now occupied, with the exception of Washington Street between Jackson and Dean Streets, which is represented in black ink, as being parallel with & 370 feet distant from that part of High Street (as it is now occupied) extending from the West line of Jackson Street to the West line of Franklin Street.

Note 2nd. The figures in Red Ink are copied from a plat of the Mathewson Land surveyed by Daniel Anthony in 1819, as recorded in Deed Book 3^d 42 - page 472 & 473.

Note 3rd. The Blue lines, figures &c. on Washington & Fountain Streets & on the adjoining lots, represent the bounds of said streets & lots as determined by drawing the south line of Washington Street from a point on the East line of Dean Street distant 94 feet from the intersection of Garden & Dean Streets to a point on the West line of Franklin Street distant 370 feet northerly from the north line of High Street as now occupied.



MAP
of SURVEYS to determine the bounds of
WASHINGTON STREET.
made by order of the Street Commissioners
March 1856 by W^m S Haines.

This Map is copied from a copy made by me from the original & now in my possession, June 11th 1861 by W^m S Haines Surveyor.

Scale 50 feet to an inch.
By Old Prov. Measure

In compliance with the request of his Honor James Y. Smith Mayor the undersigned have examined all the documents at command in relation to the layout of Washington Street had an accurate survey & plat made - and defined the lines established on said street which are shown by blue lines on said plat herewith presented.

Signed { Ada Surce }
{ Cyrus Fisher } Street Commissioners.

COMPARED.
Alfred H. Combe

OFFICE No. 419
DRAWER " 63
SHEET " A-23